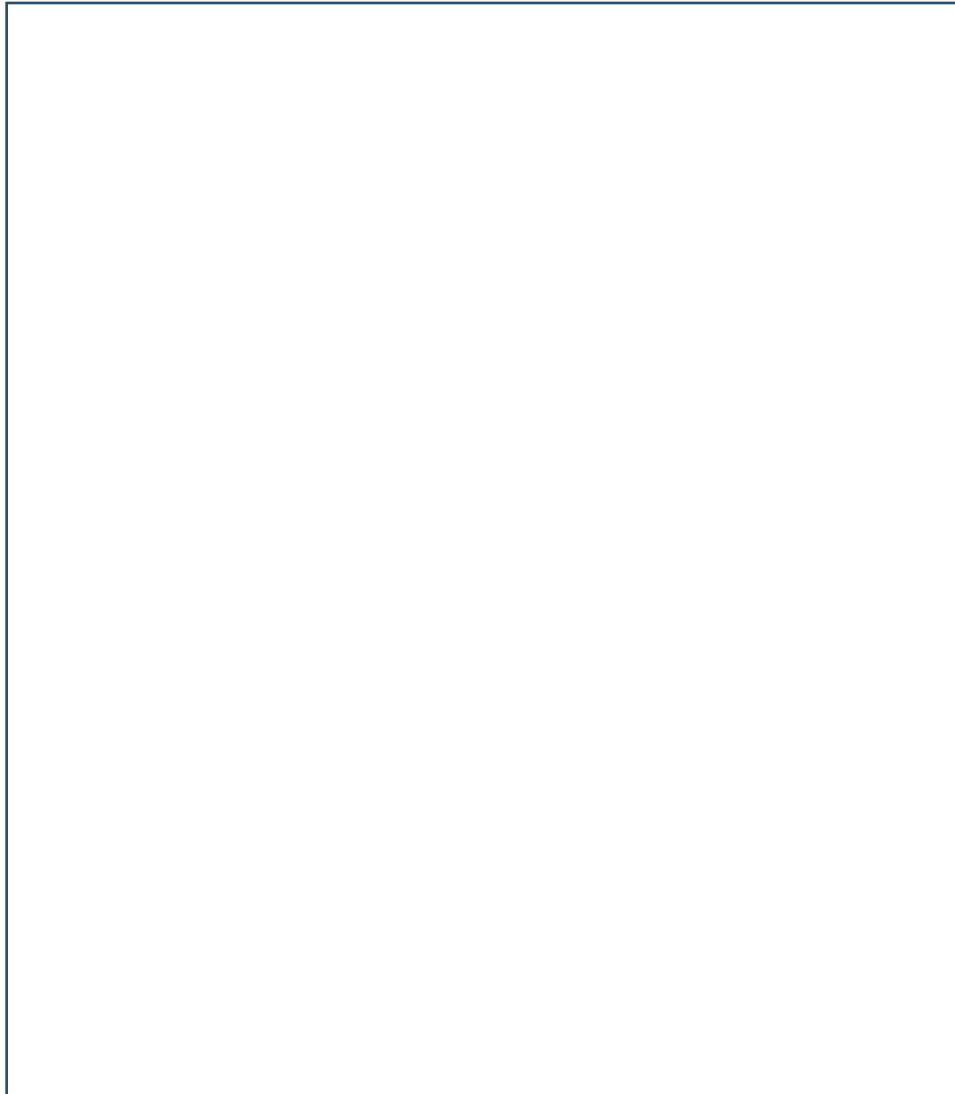




**Activity** — Use a crayon to take a rubbing from a natural texture somewhere in the Sculpture Park to record your own journey...



NewArtCentre.  
Roche Court Sculpture Park

# Richard Long

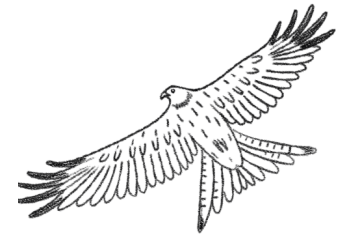
Richard Long is a land artist who has been creating art since the 1960s. Land art is made from natural materials found in the environment... it is usually only temporary!

Richard Long also made 'text work,' just like the one below. These were records of his walks while making land art.

## SPRING WALK

PRIMROSES AT 3 MILES  
FROGSPAWN AT 18 MILES  
A CROW NEST-BUILDING AT 29 MILES  
A FARMER SOWING AT 34 MILES  
LADYBIRDS AT 38 MILES  
SQUIRRELS AT 57 MILES  
LAMBS AT 62 MILES  
STICKY BUDS AT 67 MILES  
A TREE PLANTED AT 70 MILES  
A BUTTERFLY AT 85 MILES  
BLOSSOM AT 104 MILES  
DAFFODILS AT 112 MILES

AVON ENGLAND 1991



**Activity** — Walk *Tame Buzzard Line* and write your own 'text work' based on what you can see along your journey!



Richard Long, *Tame Buzzard Line*, 2001

# Sculpture Fact File...

**Q. What do you think this sculpture is made of?**

Flint found in local fields!

Flint was very important to prehistoric people who used it to make tools including arrowheads and sparks to make fire.

**Q. Where do you think this sculpture leads?**

*Tame Buzzard Line* links two of the most beautiful trees in the park; the Holm Oak near the house (which is at least 275 years old!) and an ash tree, which is also ancient for its species.

**Q. Where do you think the sculpture gets its name?**

Richard Long visited Roche Court to create a piece of land art. While seated on the steps leading to the lawn, a buzzard flew over his head between the two trees. The buzzard kept the artist company over the many months he was making the line— a very 'tame buzzard'!

**Q. What other simple shapes could make good land art?**

As well as straight lines, Richard Long uses circles, crosses, and spirals in his other sculptures.

**Talking Point** — Now you know the story behind Richard Long's *Tame Buzzard Line*, does it change how you feel about it as a piece of sculpture?

Share your thoughts...

