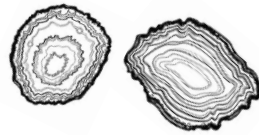


Sculpture Fact File...

NewArtCentre.
Roche Court Sculpture Park



Peter Randall-Page

Q. Where do you think this sculpture gets its name?

Fructus means 'fruit' in Latin...

Why do you think the artist chose this name? What would you call it?

Q. How heavy is *Fructus*?

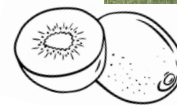
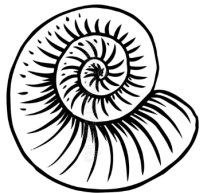
12 Tonnes– that's heavier than an African Elephant!

Peter Randall-Page's largest sculpture, *Seed*, 2003-07, was 4 meters tall and weighed 70 Tonnes (this is the approximate weight of 7 African Elephants!)

Q. What do you think this sculpture is made from?

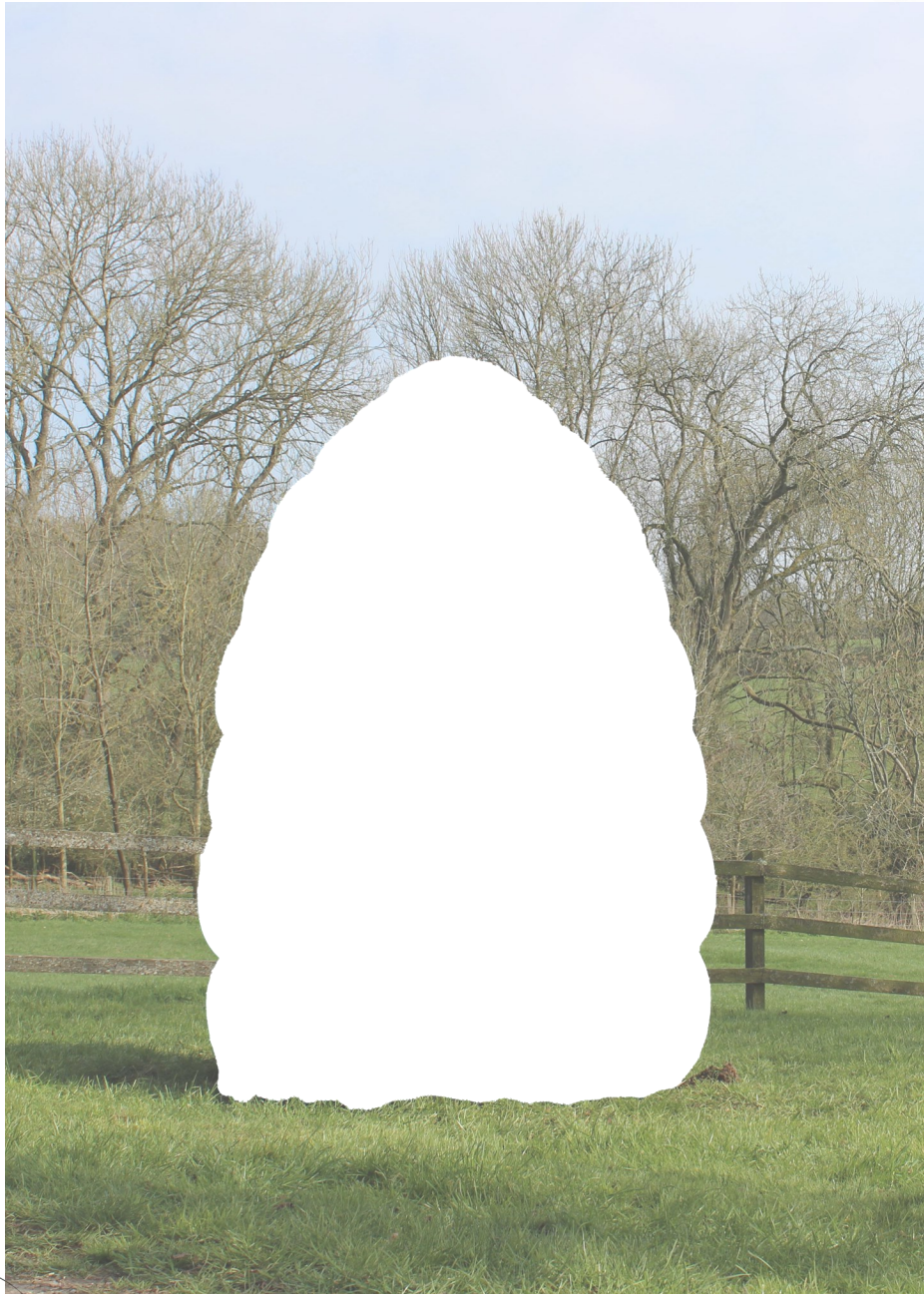
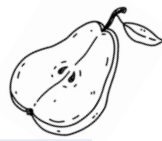
Fructus is carved from a block of Limestone. This type of stone is made almost entirely of fossils. Fossils are the remains of ancient plants and animals, like the dinosaurs. If you look closely, you can see the fossils in the sculptures smooth surface.

Activity — Can you see the fossils in the sculptures surface?
Draw what you see in the box!

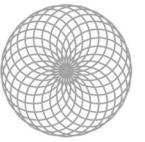


Peter Randall-Page, *Fructus*, 2009

Activity — If we sliced this sculpture in half like a kiwi, what might be hidden inside? Draw it in the space below!



Have a look at Peter Randall-Page's *Fructus*, 2009...



Talking Point —

What does the sculpture remind you of?

What do you think the sculpture is made from?

Can you see anything else in the sculptures surface?

Peter Randall-Page makes artwork inspired by nature. He also explores how nature can make us feel.

His sculptures often consider mathematic patterns in nature, like the 'Fibonacci Sequence'.

This sequence is a pattern of growth that can be found in all sorts of natural objects. You might see this pattern in a type of fossil called an 'ammonite,' or even in the yellow part of a daisy!

Activity — How heavy do you think Fructus is in tonnes? Draw a line on the scale below then find the answer on the next page...

