



Woodrow's early sculptures were built from discarded sheet metal, car doors and even washing machines!

He also uses a process called 'lost wax casting' to transform his sculptures into bronze.

Endeavour has been cast in bronze. It is one of ten sculptures inspired by the *Ship of Fools* allegory. An 'allegory' is a story with a hidden message...

Activity — See how many objects you can spot in one minute and write them below!

0 - 10 good

10 - 15 great

15 - 20 excellent



Bill Woodrow, *Endeavour*, 1994

Talking Point — What do you think the hidden message could be?

Bill Woodrow

Bill Woodrow makes art using found objects and scrap. He creates surreal and humorous compositions, changing everyday items into unusual sculptures. Have a look at Woodrow's *Endeavour*, 1994...

What do you see from...



...the grass?



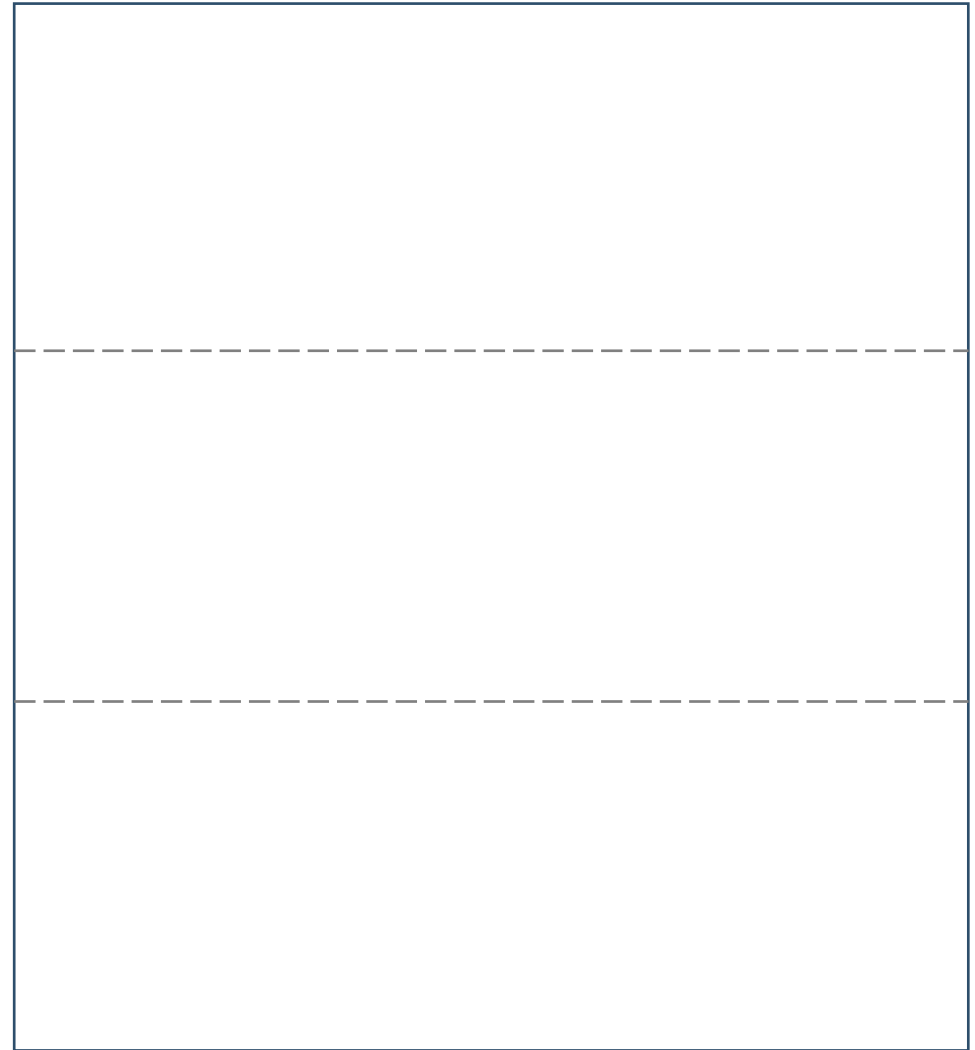
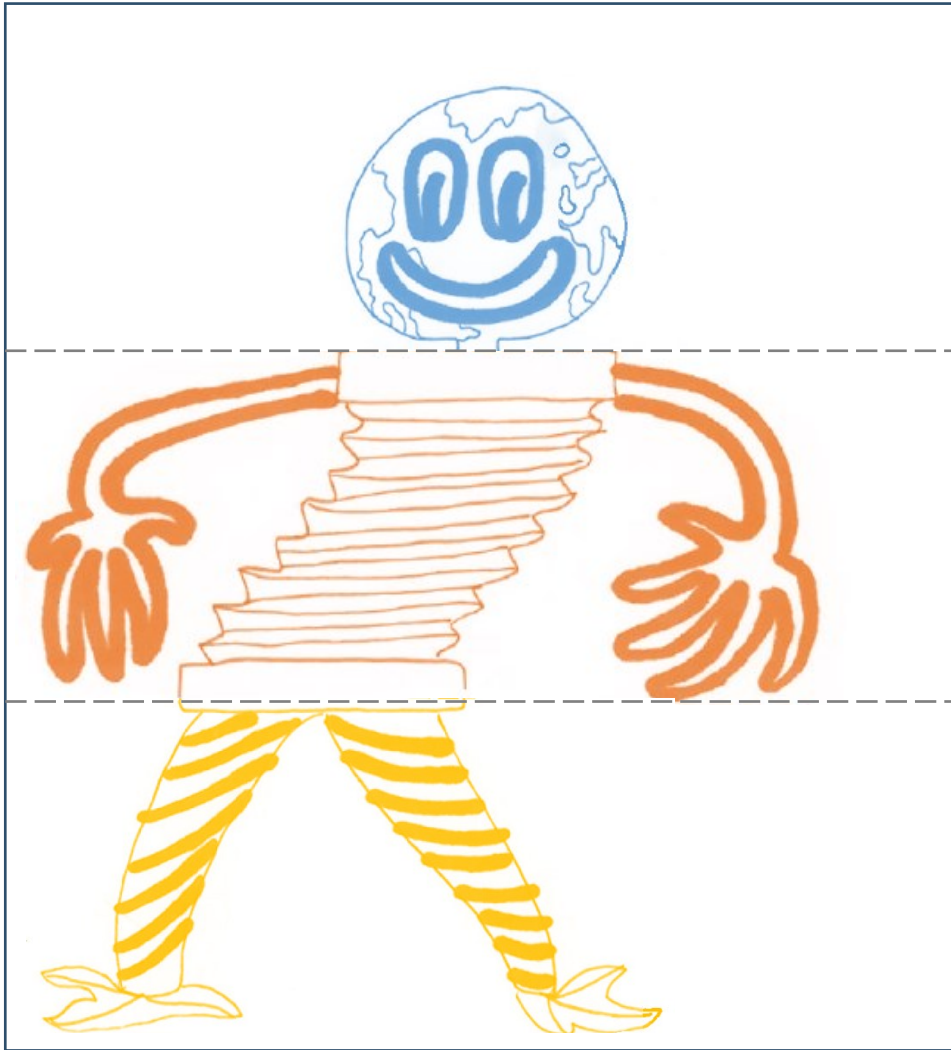
...the platform?



Activity — ‘Heads, Bodies & Legs.’ Draw a character inspired by objects you see in the sculpture!

Begin by drawing a head. Fold your page back along the dotted line to hide what you’ve drawn, then ask someone else to draw the body.

Fold again to hide this part of the drawing and repeat for the legs. Unfold to see your creation, check out our example below!



Talking Point — We’ve counted **27** objects. What themes do they fit into?
(We’ve noticed musical instruments, monsters, food, war, the environment)